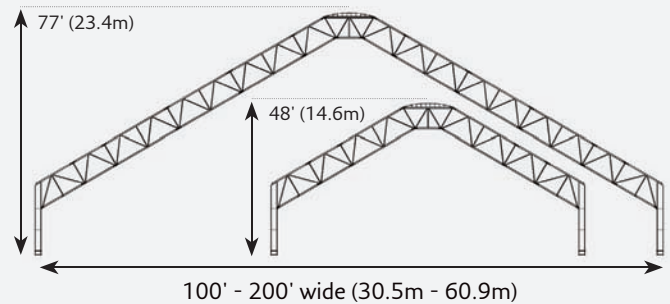
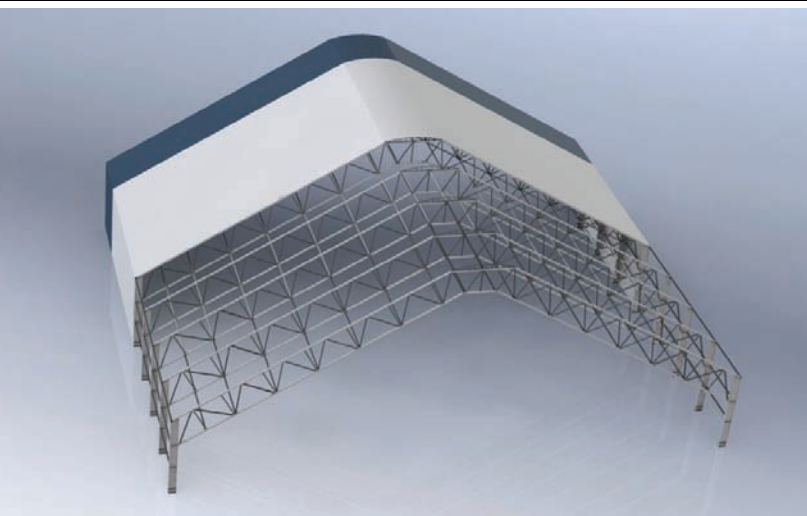


NORSEMAN STRUCTURES IS UNRELENTING IN MEETING ENGINEERING CHALLENGES

Commercial Product Line J-Series



MODEL	J100	J110	J120	J130	J140	J150	J160	J170	J180	J190	J200
Bldg Width	100' (30.5m)	110' (33.5m)	120' (36.5m)	130' (39.6m)	140' (42.6m)	150' (45.7m)	160' (48.7m)	170' (51.8m)	180' (54.8m)	190' (57.9m)	200' (60.9m)
Peak Height*	48' (14.6m)	51' (15.5m)	54' (16.4m)	57' (17.3m)	60' (18.2m)	63' (19.2m)	65' (19.8m)	68' (20.7m)	71' (21.6m)	74' (22.5m)	77' (23.4m)

TRUSS SPACING

Truss spacing is available in 6' - 20' (1.8m - 6m) widths in 1' (0.3m) increments and is determined using data specific to your site.

J-SERIES 100' - 200' WIDTHS (30.5m - 60.9m)

A premier large span building providing massive clear-span space.

The J-Series building line is designed for massive, clear-span indoor space and is built tough to withstand a range of working and weather conditions. Uses include large scale industrial applications such as bulk storage and maintenance shops. They are also perfectly suited for sports facilities allowing practice and play year round in a bright, barrier free space.

All Norseman Structures Commercial buildings are designed using the same building codes as conventional, pre-engineered steel buildings. Specifically, they are designed in accordance with structural requirements of the International Building Code and the National Building Code of Canada.

- The most robust of our building lineup with deeper truss depth (7'6"/2.3m) and larger steel used in the framework.
- Available with standard 23' (7m) high straight side walls with 15' (4.5m) internal clearance. Side wall height can be increased or decreased based on need.
- Straight side wall design allows for: side overhead doors; the ability to store products against the walls with maximum clearance; and metal cladding on walls.

1.855.385.2782 norsemanstructures.com






Fiercely Reliable™

Commercial Product Line J-Series

STEEL FRAMEWORK

Norseman Structures' J-Series building is manufactured using high strength structural steel that is hot-dipped galvanized in a bath of molten zinc. This galvanizing process creates a product that is highly resistant to corrosion and virtually maintenance free for years of worry free use. Main structural support trusses connect to wide flange columns, creating a continuous support system from the ground to the peak.

Building Width	Chord Size	Truss Wall Thickness	Chord Shape	Truss Depth	Web Size	Web Wall Thickness	Web Shape	Coating
100' - 200' (30.5m - 60.9m)	5" x 5" (127mm x 127mm)	0.188" (4.7mm)		90" (2286mm)	5" x 3" (127mm x 76.2mm) 3.5" x 2.5" (88.9mm x 63.5mm)	0.125" (3.1mm)	 	Hot-Dipped Galv

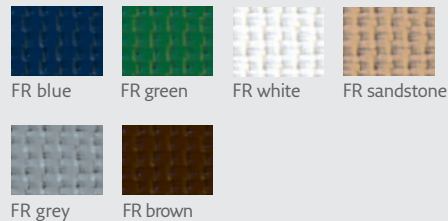
FABRIC COVERS

Our standard 12oz/yd², 23mil high performance cover fabric is manufactured specifically for your building and is available in a variety of colors. Fire retardant (FR) fabric is also available when required by your local building code. Choose from either a highly translucent cover material or blackout fabric when natural light is not required.

Standard Colors



Fire Retardant (FR) Colors



FOUNDATIONS

Foundation options are varied and may include, but are not limited to:

- Concrete piles
- Concrete spread footings
- Poured in place concrete walls
- Precast concrete walls
- Screw piles

ACCESSORIES

- Heating
- Liners
- Insulation
- Flooring
- Passive ventilation
- Ridge vents
- Electrical
- Reflective insulation
- Air exchange units
- Electric louvers or fans
- Personnel doors
- Fire exit doors
- Emergency lighting
- Metal clad end walls
- Gas detection systems
- Snow break systems
- Overhead doors
- Door canopies

WHY NORSEMAN STRUCTURES

In addition to manufacturing buildings, Norseman Structures provides project management, technical representative services and complete building installations. Our team of experts will work closely with you to design a building solution that will work for you and your business.



1.855.385.2782 norsemanstructures.com

0101-14 01282014 Norseman, Norseman & Design and Fiercely Reliable are trademarks of Norseman Group Ltd.